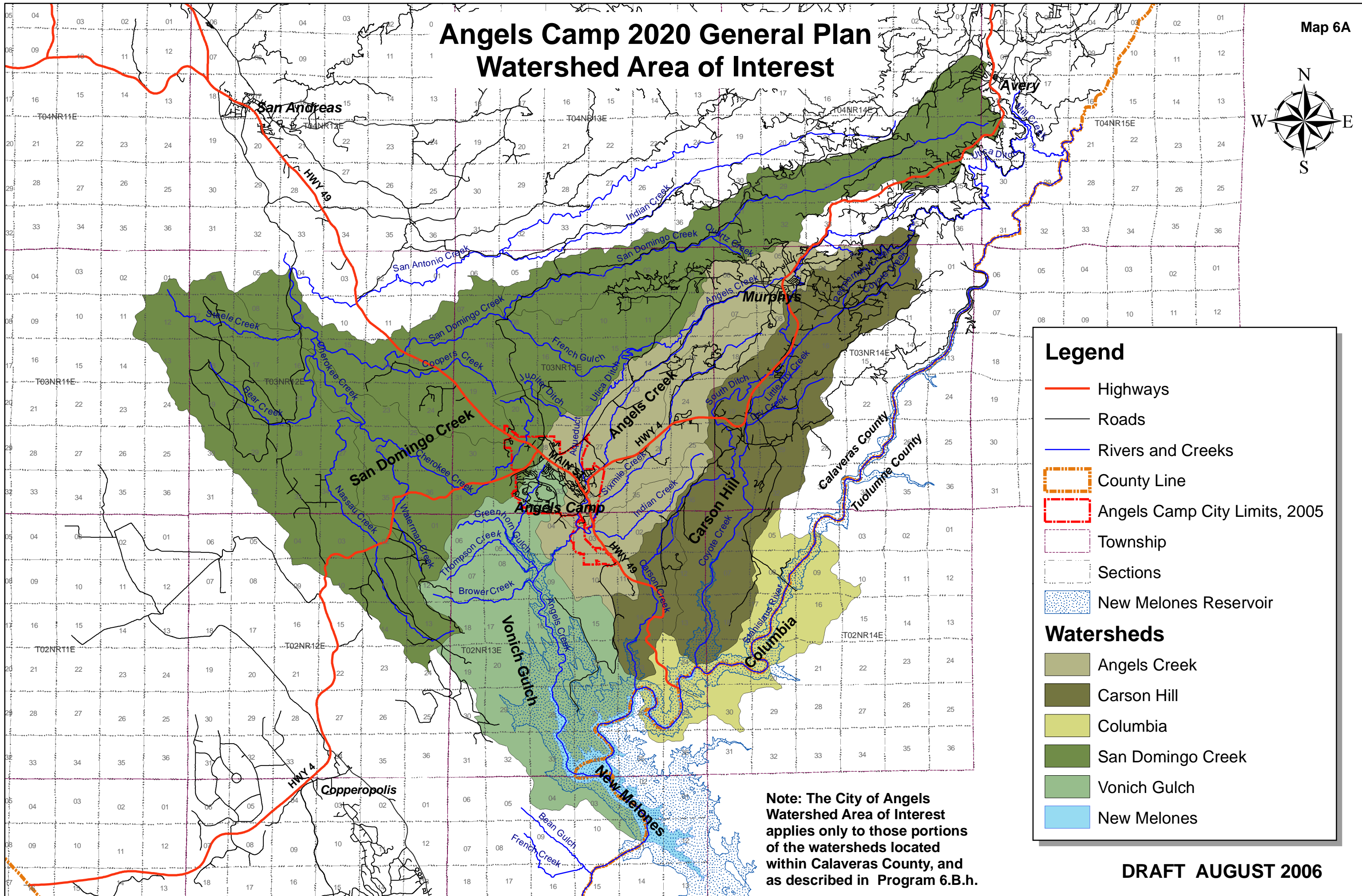
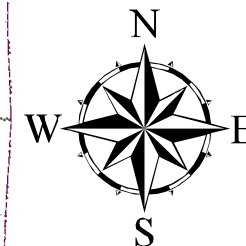


Angels Camp 2020 General Plan Watershed Area of Interest

Map 6A



Legend

- Highways
- Roads
- Rivers and Creeks
- County Line
- Angels Camp City Limits, 2005
- Township
- Sections
- New Melones Reservoir

Watersheds

- Angels Creek
- Carson Hill
- Columbia
- San Domingo Creek
- Vonich Gulch
- New Melones

Note: The City of Angels Watershed Area of Interest applies only to those portions of the watersheds located within Calaveras County, and as described in Program 6.B.h.

DRAFT AUGUST 2006